



Meet Kaycee Denny - Military Team

Kaycee leads our military efforts at the Wichita Falls Chamber of Commerce and has been an active-duty spouse for almost four years. She came with her husband from the Seymour Johnson Air Force Base in North Carolina and is a key spouse within his squadron here at Sheppard Air Force Base. When she is not working, you can find her and her husband enjoying hiking and camping outdoors. Kaycee is pivotal in ensuring that our residents and military personnel needs and concerns are heard and addressed. She ensures effective communication, mutual understanding, and collaborations between our community and the base are happening.



Wichita Falls shares a unique bond with Sheppard Air Force Base, the presence of our military

personnel is more than just a geographical fact. It symbolizes strength, unity, and the responsibility of supporting those who selflessly serve our nation. By fostering a strong relationship, we can enhance support systems for military families, promote local businesses, and create an environment where everyone feels connected and appreciated.

Last week, we rolled out our "We Support Sheppard" campaign to spread the word out about this program. We want to strengthen our ties and support the military community. This unique initiative caters to military members, active-duty spouses, foreign military partners, veterans, and retirees. The program started in 2023 and was exclusively available to Chamber Members to receive recognition on our website as a military-friendly establishment and a "We Support Sheppard" decal was given to them. Since making the announcement, the program has received great response from the community and is NOW open to all community businesses! SAFB accounts for 35% of the Wichita County economy; by contributing to the local economy and encouraging spending within our community, we can ensure that our military members and their families feel valued, and supported.

If you are a Chamber Member and offer a military discount or would like to start, please contact Kaycee at kaycee@wichitafallschamber.com.



Chamber Happenings

Look Out for the Giant Scissors

Join the Chamber Team and Gold Coat Ambassadors in a Ribbon-Cutting celebration as our community presence grows. Save the date and be a part of it!

- [The Golf Factory](#): Thursday, February 1, at 922 Indiana Ave., at 2:00 p.m.

Featured Events

Retro Party at Crunch Fitness

Crunch is throwing it back this month! Bust out your favorite decade clothes and come party with them on Monday, January 29, from 5:00 p.m. to 8:00 p.m. for a Retro Party at Crunch! Tell your friends about this party, bring a friend or two to get down and wear your favorite decade's fashion. Celebrate with Vendors, Prizes, & MORE! Don't forget about FREE Workouts for everyone!



Beyond Bird Seed

Did you know that February is National Bird Feeding Month? Our friends at Smith's Gardentown will show you how to attract all the beautiful birds to your yard with different types of food and feeders. Join them on Saturday, February 3, at 1:00 p.m.



What's Happening This Week

Tuesday, January 30

- [PETS Low Cost Spay & Neuter Fundraiser](#): At Jasons Deli, starting at 10:00 a.m. to 8:00 p.m.
- [Art Lab - Creative Kids](#): At Kemp Center for The Arts, starting at 4:00 p.m. to 5:00 p.m.

Wednesday, January 31

- [Boom Box Bingo – 70s to 2010s](#): At the Deep End, starting at 7:00 p.m. to 10:00 p.m.

Thursday, February 1

- [Thursday Night Karaoke with Lelani](#): At The Iron Horse Pub, starting at 8:00 p.m.
- [Mommy & Me- Gardening](#): At CrashWorks STEAM Studio & Marketspace, starting at 10:00 a.m. to 11:00 a.m.

Friday, February 2

- [Between the Lines Book Club](#): At the Wichita Falls Public Library, starting at 10:15 a.m. to 11:45 a.m.
- [Rob Leins and Zack Crow](#): At The Iron Horse Pub, starting at 9:30 p.m.

Saturday, February 3

- [Beyond Bird Seed](#): At Smith's Gardentown, starting at 1:00 p.m.
- [Community Shred Saturday](#): At Paper Pig, starting at 9:00 a.m. to 12:00 p.m.

Sunday, February 4

- [Sunday Brunch](#): At Horseshoe Bend Cellars, starting at 12:00 p.m. to 3:00 p.m.
- [LOVE Palate to Palette – A Wine & Painting Party](#): At OG Cellars at The Holt, starting at 2:00 p.m.

What's Happening Next Week?

Monday, February 5

- [ISR Sessions](#): At the Wellness Center of North Texas Rehab, starting at 8:00 a.m.

Tuesday, February 6

- [i.d.e.a. WF Orientation](#): At the Dillard College of Business Administration, starting at 5:30 p.m. to 7:00 p.m.
- [Beeswax Candle Workshop](#): At Gilbert Creek Gardens, starting at 6:30 p.m. to 8:00 p.m.

Wednesday, February 7

- [DIY Kids](#): At the Wichita Falls Public Library, starting at 4:30 p.m. to 5:30 p.m.
- [Sweetheart Sale](#): At Clarke EyeCare Center, starting at 8:30 a.m. to 5:30 p.m.

Thursday, February 8

- [WFISD Foundation Indoor Golf Tournament](#): At Next Level Golf, starting at 2:00 p.m. to 3:00 p.m.
- [Wichita Falls' Galentine's Thrift + Sip](#): At Ramble & Company, starting at 6:30 p.m. to 8:30 p.m.

Friday, February 9

- [Valentine's Party](#): At Live Love Fashion, starting at 10:00 a.m. to 6:00 p.m.
- [Sweethearts Date Night](#): At Horseshoe Bend Cellars Vineyard & Winery, starting at 2:00 p.m. to 9:00 p.m.

Saturday, February 10

- [Volleyball Power Combine & Camp](#): At Endunamoo Strength & Conditioning, starting at 12:00 p.m.
- [Casino Night](#): At Half Pint Taproom & Restoration Hall, starting at 7:00 p.m. to 11:00 p.m.

Sunday, February 11

- [Galentine's Tea Party](#): At 8th Street Coffee House, starting at 3:30 p.m.
- [Potluck Super Bowl Party](#): At the Deep End, starting at 6:00 p.m.

State of the Economy

The Wichita Falls Chamber's State of the Economy will be a gathering of National, State and Local Economic Experts for the purpose of discussing the current state of affairs. The event will take place on March 19, 2024 at 10:00 a.m. to 1:00 p.m. at Sikes Lake Center.

This event's guest speaker is Wells Fargo's Corporate and Investment Banks Economist, Nicole Cervi. Nicole is a graduate from the University of North Carolina at Chapel Hill and oversees the U.S. macro economy and assists with quantitative analysis. Nicole also contributes to the group's Weekly Economic & Financial Commentary and other various special reports. Click the [link](#) to buy your tickets today!



STATE OF THE ECONOMY



Interested in Being A Part of the Community Guide in 2024?

The Wichita Falls Chamber of Commerce has partnered with E&M Consulting, Inc. to produce our Community Guide. This comprehensive publication will be available both in print and digitally, providing an exceptional opportunity for businesses in the area to gain significant exposure through advertising. This guide will be a go-to resource for Chamber members, residents, and visitors, making it the perfect platform for businesses to showcase their offerings to a broad audience. E&M, known for its professionalism and quality, will manage this project, including advertising sales and the design process.

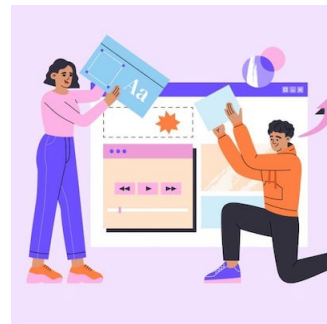
To explore advertising rates and sign up online, visit: <https://reserveyourad.com/WFCOC/>

Inc.com

This Founder Is on a Mission to Make Information More Accessible for the Hard-of-Sight Community

After countless clients came to the Splash Box Marketing founder for help with 508 remediation, she devoted herself to making the internet a more equitable place.

[Read more](#)



Inc.com

Google Just Teased a Crazy AI Video Generating Service. Start Thinking of What It Could Do for Your Business

A quick video preview of what Lumiere is capable of shows just how far generative AI tech has come. And how far it could go.

[Read more](#)



<https://www.newschannel6now.com>

WFPD to host Women in Law Enforcement Social

The Wichita Falls Police Department is hosting its Women in Law Enforcement Social Saturday, Jan. 27 from 10 a.m. to 12 p.m.

[Read more](#)

